



# 2026 - Bloomberg Commodity Index (BCOM) Rebalancing

8-Jan-2026

**Kedia Stocks and Commodities Research Pvt. Ltd.**

SEBI Registration Number: INH000006156





The Bloomberg Commodity Index (BCOM) Rebalancing is an annual process in which the Bloomberg Commodity Index—a widely followed benchmark tracking the performance of 23 physical commodities across sectors like energy, metals, and agriculture—adjusts its weightings to maintain diversification. This rebalancing typically occurs in January each year and ensures that no single commodity or commodity group becomes too dominant in the index.

#### Key Features of BCOM Rebalancing:

- Diversification and Weight Caps:** To maintain balance, each commodity in the index is capped at 15% of the total weight. No group of commodities (such as metals, energy, or agriculture) can exceed 33% of the index. This helps reduce overexposure to any one commodity that could skew the index's performance.
- Portfolio Adjustments:** As part of the rebalancing process, passive funds that track the BCOM index (with over \$100 billion in assets under management) must adjust their portfolios to match the new weightings. This involves buying and selling futures contracts in commodities that have either gained or lost weight in the index.
- Impact on Market Liquidity:** Since passive funds must sell commodities that have become overweight (like gold and silver after a strong performance year) and buy those that are underrepresented (like copper or cocoa), the rebalancing process can lead to significant market movements and short-term volatility. The process generally takes 6-10 business days, with daily adjustments to minimize market disruption.
- Why It Matters:** The BCOM index is a key tool for investors and traders in the commodities market. The rebalancing ensures that the index reflects the current market conditions and provides a diversified exposure to commodities, avoiding overconcentration in any one sector.



The BCOM rebalancing is a mechanical adjustment designed to maintain the index's diversified structure, ensuring no single commodity exceeds the 15% weight cap. This process has short-term market implications as passive funds realign their portfolios, influencing commodity prices, trading volumes, and market behavior. The rebalancing ensures the index reflects current market conditions and commodity fundamentals. For investors and traders, it creates both risks and opportunities, particularly due to the volatility in affected commodities and potential shifts in market sentiment. The adjustments help maintain diversification while responding to evolving market dynamics.

## 2026 Bloomberg Commodity Index (BCOM) Rebalancing

The 2026 Bloomberg Commodity Index (BCOM) Rebalancing is set to occur from January 8-15, 2026, with significant implications for global commodity markets. The rebalancing, a routine process designed to maintain the index's diversification, enforces a 15% cap per commodity and ensures no single commodity group exceeds 33% of the index's weight. With BCOM's \$109 billion assets under management (AUM), passive funds tracking the index are required to adjust their portfolios, triggering large-scale buying and selling in commodity futures.

### Highlights

- Gold weight cuts from 20.4% to 14.9%, ~\$7B sell-offs.
- Silver drops from ~9.6% to ~1.45–4%, ~\$7.1B sales.
- Copper weight rises to ~6.4%, attracting ~+\$1B inflows.
- BCOM's AUM ~\$109B driving heavy rebalance flows.
- Silver OI could shrink ~13–17% amid selling pressure.

Gold and silver, which posted massive gains in 2025 (65% and 148%, respectively), are undergoing the most significant adjustments. Gold's weight will drop from 20.4% to 14.9%, and silver's weight could fall drastically from 9.6% to as low as 1.45–4%. This will lead to an estimated \$14 billion in selling pressure, with gold accounting for approximately \$7 billion in futures sales and silver facing up to \$7.1 billion in sales. These mechanical sell-offs, driven by the need for passive funds to realign their holdings, will likely trigger short-term volatility in both metals.

Conversely, copper, which sees an increase in weight from 5.4% to 6.4%, and cocoa, added to the index after more than 20 years, are expected to receive a combined \$1 billion in buying flows. Other energy commodities, such as Brent crude, are also set to see inflows, while WTI crude and natural gas will face selling pressure.

This rebalancing coincides with market holidays in Japan and China, likely contributing to thinner liquidity and heightened volatility. While the mechanical nature of these adjustments will create short-term market noise, analysts suggest that the long-term fundamentals for commodities like copper and cocoa remain strong, presenting potential opportunities for traders in the post-rebalance period.





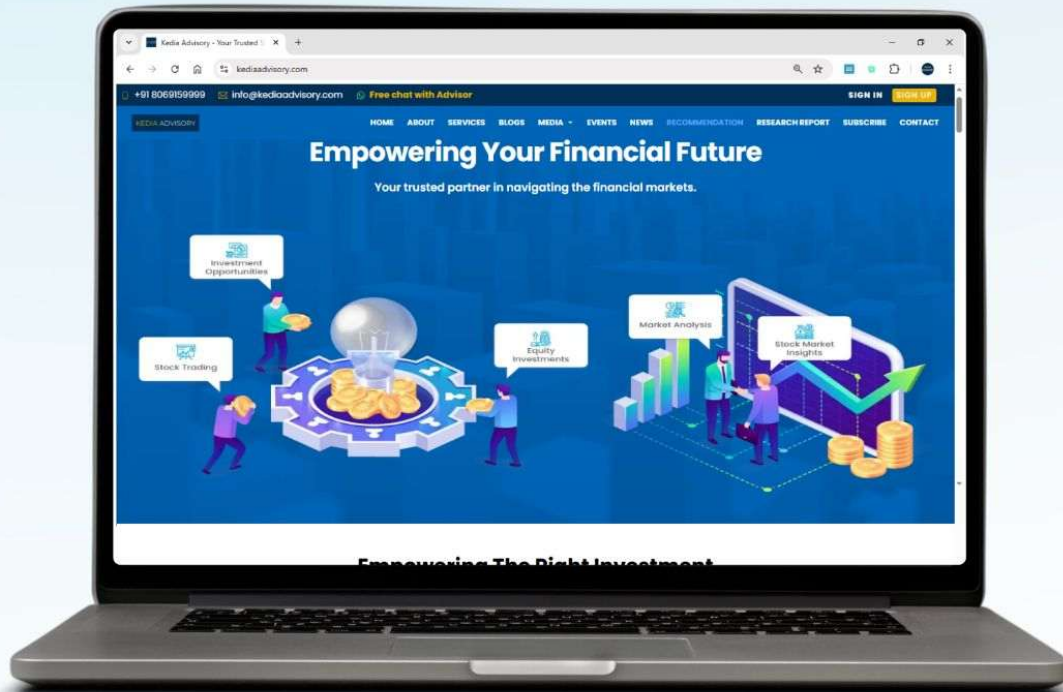
Source: As per market sources

8-Jan-2026

Bullish Factors	Reason	Bearish Factors	Reason
<b>Copper Buy:</b> Increased weight from 5.4% to 6.4%, leading to potential \$1B inflow.	Copper's weight increase reflects its critical role in electrification and EV growth, attracting buying flows.	<b>Gold Sell:</b> Weight reduction from 20.4% to 14.9%, resulting in \$7B futures sales.	Gold faces a weight reduction due to the 15% cap, triggering large sales by passive funds tracking the BCOM index, pressured by 2025's massive gains.
<b>Cocoa Buy:</b> Cocoa added with 1.71% weight after 21 years, prompting \$17M inflows.	Cocoa's inclusion after over two decades presents a fresh investment opportunity, resulting in buying interest and inflows.	<b>Silver Sell:</b> Silver's weight cut from 9.6% to 1.45-4%, triggering \$7.1B futures sales.	Silver's weight reduction is a direct result of its outsized 2025 performance, leading to large passive sales to rebalance the index's exposure.
<b>Brent Crude Buy:</b> Increased weight from 7.2% to 8.36%, attracting potential buying flows.	As global demand for oil remains strong, Brent's increased weight within the BCOM index signals more buying, offering long-term bullish momentum.	<b>Energy Sell:</b> WTI Crude and Natural Gas both face slight weight reductions.	Reductions in WTI Crude and Natural Gas are likely to result in passive funds selling these positions, creating pressure on their prices.
<b>Livestock Buy:</b> Livestock commodities are likely to see buying support, driven by BCOM adjustments.	Livestock has seen increased demand globally, and with a larger share in the BCOM index, it may attract inflows, benefiting from the diversification trend.	<b>Metals Volatility:</b> Precious metals like gold and silver experience selling pressure post-2025 rally.	With metals like gold and silver performing exceptionally well in 2025, they are now facing rebalancing-induced selling, increasing volatility in the short term.
<b>Favorable for Copper Deficit:</b> Copper remains attractive due to continued supply-demand imbalances.	Copper's long-term bullish outlook is fueled by the demand for green energy technologies, batteries, and EVs, supporting sustained price growth.	<b>COMEX Silver OI Drop:</b> Silver's open interest could decrease by 13-17%, amplifying short-term volatility.	A sharp drop in silver's open interest due to BCOM rebalancing creates further uncertainty, likely to cause price fluctuations in the near term.
<b>Post-Rebalance Rotation:</b> Likely rotation towards higher-beta commodities, including copper and cocoa, after rebalancing.	After the mechanical selling of precious metals, funds may rotate into higher-risk, higher-return commodities like copper and cocoa.	<b>BCOM Negative Performance:</b> Short-term negative pressure on BCOM as mechanical selling outweighs the buying flow.	The mechanical nature of rebalancing leads to broad short-term selling pressure across metals, commodities, and energy markets, causing a dip in the BCOM performance.



# Stay Ahead in Markets with Kedia Advisory



Get Live Commodity & Equity Market Updates backed by in-depth research, data-driven insights, and expert analysis.



## Why Kedia Advisory

- Real-time market updates
- Key levels & trend direction
- Research-based market views
- Trusted by active traders & investors

**Visit: Kedia Advisory Website**

**www.kediaadvisory.com**

CLICK HERE



**SCAN ME**



**Kedia Stocks and Commodities Research Pvt Ltd**

**SEBI REGISTRATION NUMBER : INH000006156**

Aadinath Commercial, Opp. Mumbai University, Vasant Valley Road, Khadakpada, Kalyan West

Investment in securities market are subject to market risks, read all the Related documents carefully before investing.



**FOLLOW US**



**Scan the QR to  
connect with us**

**KEDIA ADVISORY**

## **KEDIA STOCKS & COMMODITIES RESEARCH PVT LTD.**

Mumbai. INDIA.

For more details, please contact Mobile: +91 9619551022

Email: [info@kediaadvisory.com](mailto:info@kediaadvisory.com)

SEBI REGISTRATION NUMBER - INH000006156

For more information or to subscribe for monthly updates

Visit [www.kediaadvisory.com](http://www.kediaadvisory.com)

This Report is prepared and distributed by Kedia Stocks & Commodities Research Pvt Ltd. for information purposes only. The recommendations, if any, made herein are expressions of views and/or opinions and should not be deemed or construed to be neither advice for the purpose of purchase or sale through KSCRPL nor any solicitation or offering of any investment /trading opportunity. These information/opinions/ views are not meant to serve as a professional investment guide for the readers. No action is solicited based upon the information provided herein. Recipients of this Report should rely on information/data arising out of their own investigations. Readers are advised to seek independent professional advice and arrive at an informed trading/investment decision before executing any trades or making any investments. This Report has been prepared on the basis of publicly available information, internally developed data and other sources believed by KSCRPL to be reliable. KSCRPL or its directors, employees, affiliates or representatives do not assume any responsibility for or warrant the accuracy, completeness, adequacy and reliability of such information/opinions/ views. While due care has been taken to ensure that the disclosures and opinions given are fair and reasonable, none of the directors, employees, affiliates or representatives of KSCRPL shall be liable for any direct, indirect, special, incidental, consequential, punitive or exemplary damages, including lost profits arising in any way whatsoever from the information/opinions/views contained in this Report. The possession, circulation and/or distribution of this Report may be restricted or regulated in certain jurisdictions by appropriate laws. No action has been or will be taken by KSCRPL in any jurisdiction (other than India), where any action for such purpose (s) is required. Accordingly, this Report shall not be possessed, circulated and/ or distributed in any such country or jurisdiction unless such action is in compliance with all applicable laws and regulations of such country or jurisdiction. KSCRPL requires such a recipient to inform himself about and to observe any restrictions at his own expense, without any liability to KSCRPL. Any dispute arising out of this Report shall be subject to the exclusive jurisdiction of the Courts in India.